



Dee Estuary Regatta 2013

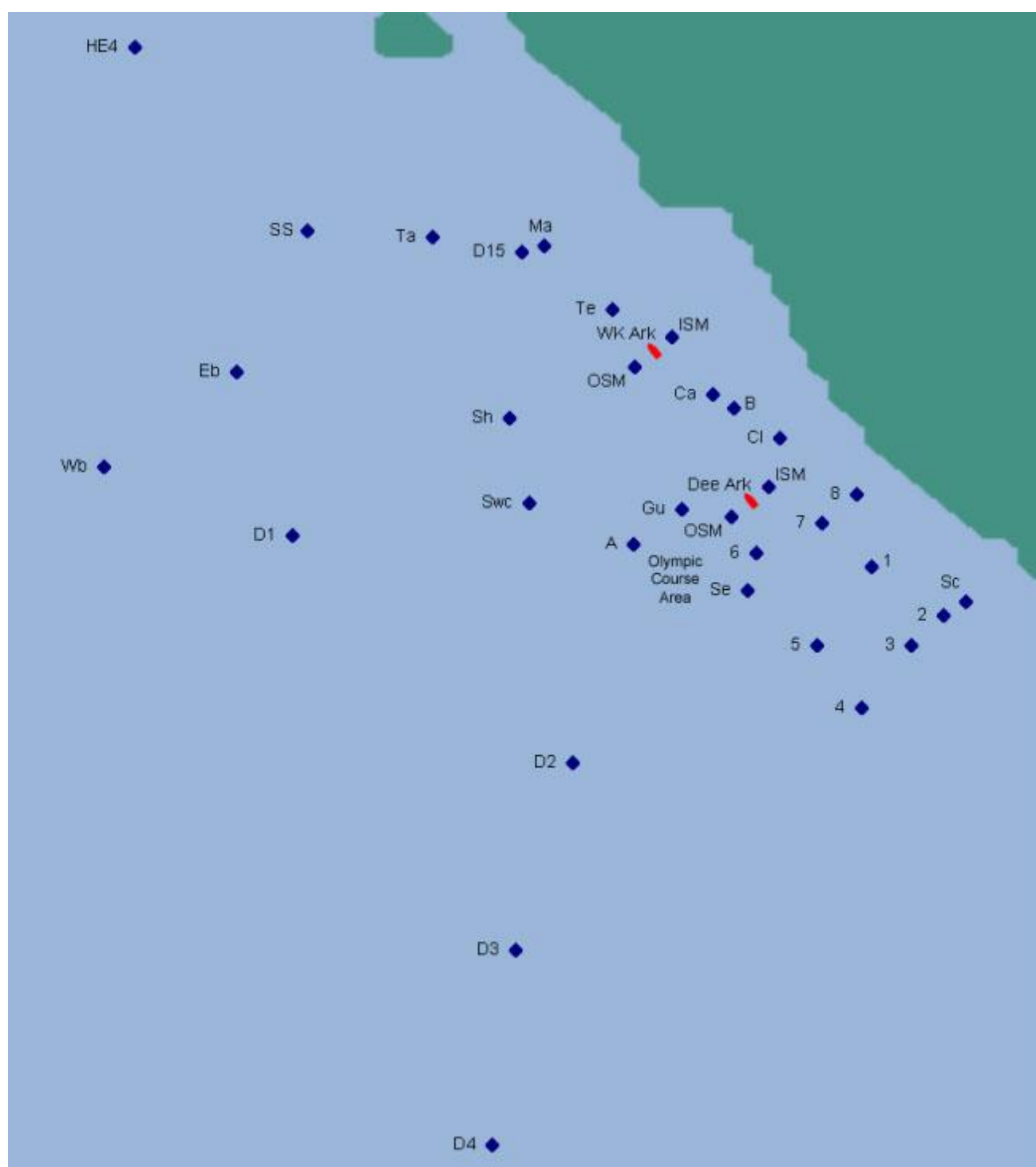


Classes 1 - 7

Dee Estuary Courses

The course marks are estuary buoys of a variety of shapes and sizes.

1. The course marks are estuary buoys of a variety of shapes and sizes.
2. The start / finish marks are Outer Start Mark (OSM) or Inner Start Mark (ISM) placed offshore and inshore of relevant committee boat WK Ark or Dee Ark depending on which regatta is being sailed.
3. The starting line will be between a staff flying an Orange flag on a race committee boat and the start mark indicated in the course description.
4. If any of the start / finish marks are used in the course then boats must pass between them and the committee boat.
5. Each lap of the course is shown on a separate line and the last mark of each lap is highlighted in **bold**.
6. The Finishing Line will be between a staff flying an Orange flag on a race committee boat and the last mark of a lap.
7. If the race must be shortened part way around a lap, the finishing line will be between a staff flying an S flag on a race committee boat and any mark of the course in the vicinity of which the race committee boat has taken station.



No	Start	Course						Recommendation ⓘ	
1	ISM(S)	TA(P) TA(P) 1(P) D15(P) 1(P)	SH(P) OSM(S) ISM(S) OSM(S) ISM(S)	1(P)	ISM(S)			Tidal N to W	
2	ISM(S)	MA(P) MA(P) MA(P) 1(P)	SE(P) 1(P) OSM(S) ISM(S)	1(P) ISM(S)	ISM(S)			Tidal N	
3	OSM(P)	D1(P) D2(P) SH(P)	1(P) 1(P) 1(P)	ISM(S) ISM(S) ISM(S)				Tidal W or E	
4	OSM(S)	D2(P) 4 (P) D2(P)	ISM(S) SC(P) ISM(S)	ISM(S)				Tidal SW or E	
5	OSM(S)	SWC(P) TE(P) TE(P)	D2(P) D2(P) SWC(P)	ISM(S) NTH(P) STH(S)				Tidal SW or NE	
6	ISM(S)	D15(P) D15(P) D15(P)	D2(P) SWC(P) SH(P)	SWC(S) 1(P) 4(P)	OSM(P) ISM(S) ISM(S)			Tidal S	
7	OSM(S)	SC(P) 4(P) 1(P)	1(P) 1(P) ISM(S)	TE(P) MA(P)	OSM(S) OSM(S)			Tidal S or SE	
8	ISM (S)	D15(P) D15(P) D15(P)	3(S) 3(S) 3(S)	6(S) 6(S) 6(S)	3(P) 3P 3(P)	ISM(S) ISM(S) ISM(S)		Catamaran N to W	
9	ISM (S)	D15(P) D15(P) D15(P)	6(P) 6(P) 6(P)	B(S) B(S) B(S)	4(P) 4(P) 4(P)	8(P) 8(P) 8(P)	3(S) 3(S) 3(S)	ISM(S) ISM(S) ISM(S)	Catamaran W to S
10	OSM (S)	3(S) 3(S) 3(S)	4(S) 4(S) 4(S)	8(P) 8(P) 8(P)	6(S) 6(S) 6(S)	D15(S) D15(S) D15(S)	OSM(S) OSM (S) OSM (S)		Catamaran S to E
11	ISM (S)	D1(S) D1(S) D1(S)	B(S) B(S) B(S)	D2(P) D2(P) D2(P)	3(P) 3(P) 3(P)	ISM(S) ISM(S) ISM(S)			Catamaran E to N
12		AS DISPLAYED ON THE COMMITTEE BOAT							

Key to Buoys									
		CA	Cawdy	D15	Dry 15			TA	Tansky
OSM	Outer Start Mark	CL	Cliff ⓘ	EB	East Bar	SE	South End	TE	Tell
ISM	Inner Start Mark	D1	Dee No 1	GU	Gut	SH	Shell		
NTH	North Start Mark	D2	Dee No 2	MA	Marine	SS	Seldom Seen		
STH	South Start Mark	D3	Dee No 3	SC	Sally's Cottage ⓘ	SWC	South West Corner		

Notes :

To maintain course integrity under different wind directions the start finish line may be rotated anti-clockwise by up to approximately 45 degrees.